

## Paths, Traps and Safe Passage - Exhibition Brief

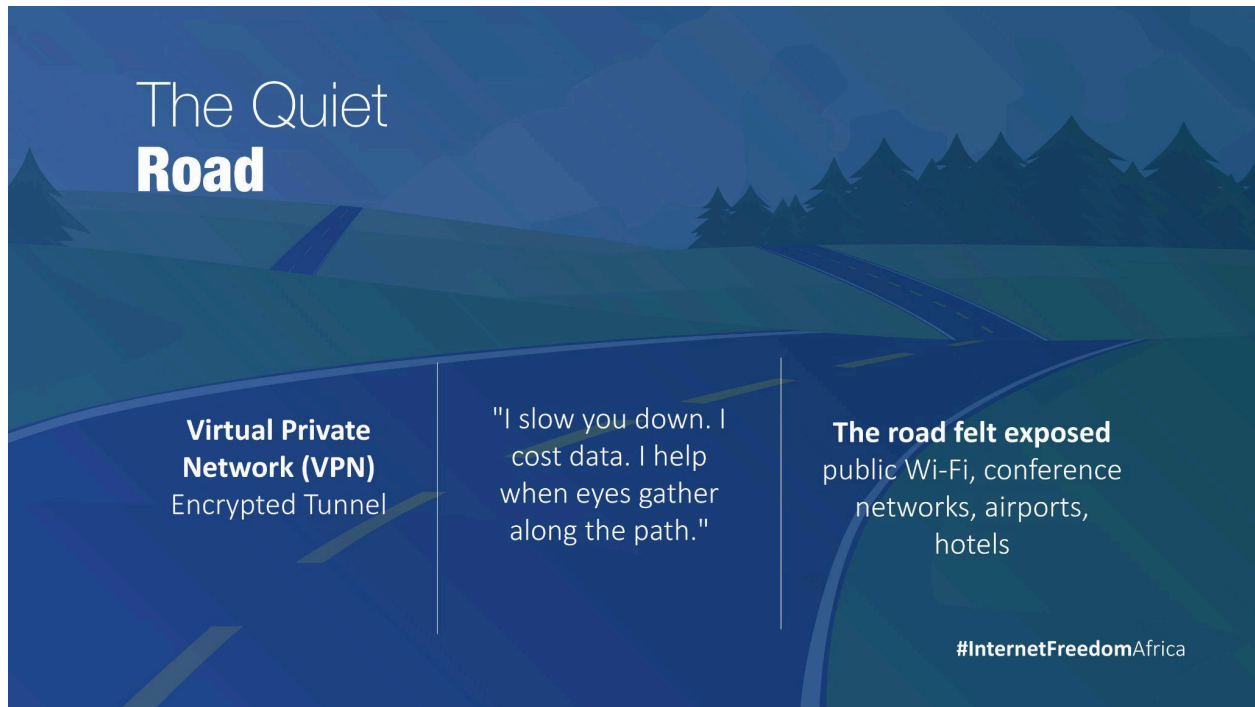
### The Walk Structure

The physical experience maps onto moments in a day:

<b>Stage</b>	<b>Day moment</b>	<b>Quadrant</b>
You wake	First touch of the phone	Q2: What You Carry
You connect	Network choice	Q1: The Road That Offers Itself
You receive	Message, link, call	Q3: The Voice That Knows Your Name
You respond	Click, share, reply	Q3 continued
You transact	Mobile money, banking	Q1/Q2 overlap
You are watched	Surveillance, exposure	Q4: When Did You Stop Being Alone?
You resist	Refusal, documentation	Q4 continued
You protect what you carry	Device, data, identity	Q2
You find others	Community, solidarity	Exit Exhibition

## Thematic Quadrants

*"The Road That Offers Itself"*



**Thematic mapping:** Network & Connectivity Threats

**Day stage:** *You connect*

**Deceptive abundance. The danger here looks like help.**

**Conceptual frame:** Free Wi-Fi at a market stall. An airport charging kiosk. The conference network that has a name identical to the official one, almost. The road offers itself — and the offer is the trap. This quadrant does not ask why you connected.

Qn: *what made the offer irresistible?* Infrastructure scarcity, urgency, trust in the venue?

**Companions (The quiet road):** VPN, Tor,

"What You Carry Carries You"



**Thematic mapping:** Malware & Device Compromise

**Day stage:** *You wake / You protect what you carry*

**Weight and intimacy.** *This quadrant is about what lives inside the thing you hold every hour of the day.*

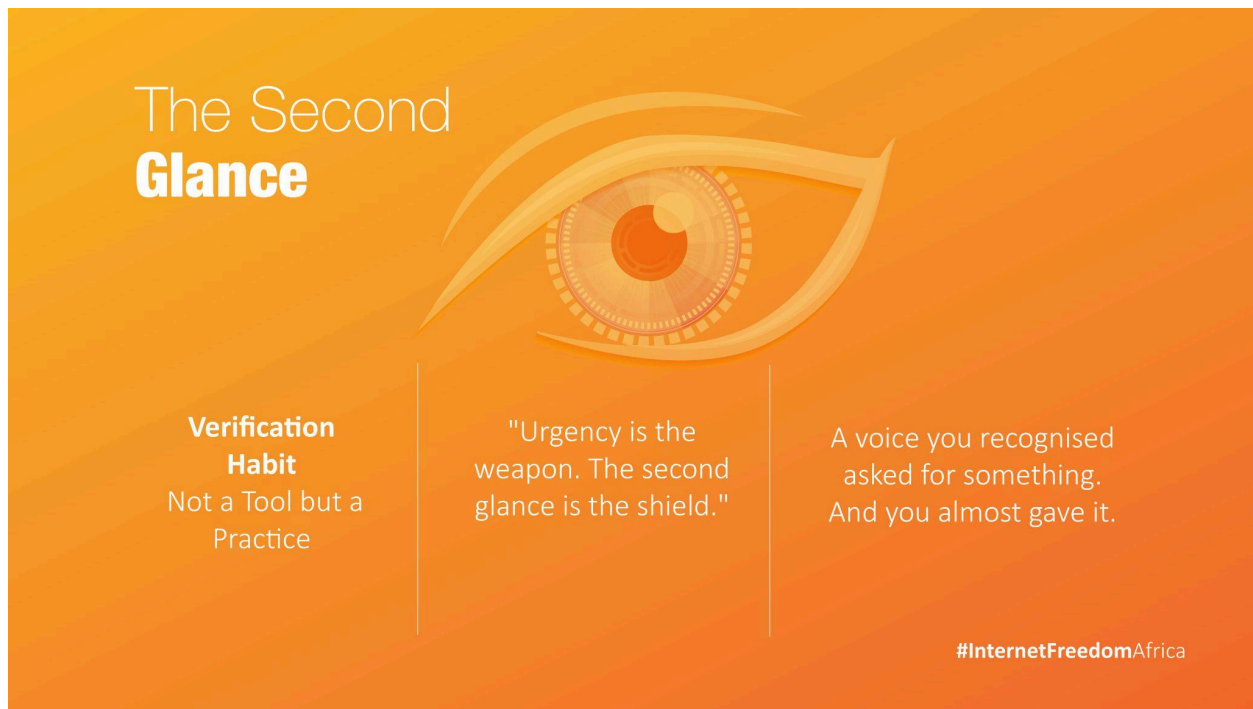
**Conceptual frame:** The phone is not just a device. It is the bank, the office, the identity document, the family photo album, the organising tool, the evidence archive. In much of Africa, it is also shared — across family members, across generations, across emergencies. This quadrant refuses the framing of "device compromise" as a technical failure.

*Qn: what are the social conditions that make the device vulnerable? And: what does it mean to carry everything in one object that passes through other people's hands?*

**Companions (The Lock That Remembers):** FDE, strong passphrase,

*"I protect what is held, not what is sent. I cannot protect what has already left."*

## "The Voice That Knows Your Name"



**Thematic mapping:** Social Engineering & Phishing

**Day stage:** *You receive / You respond*

**Familiarity weaponised.** *This quadrant is about trust — how it is built, how it is read, and how it is used against you.*

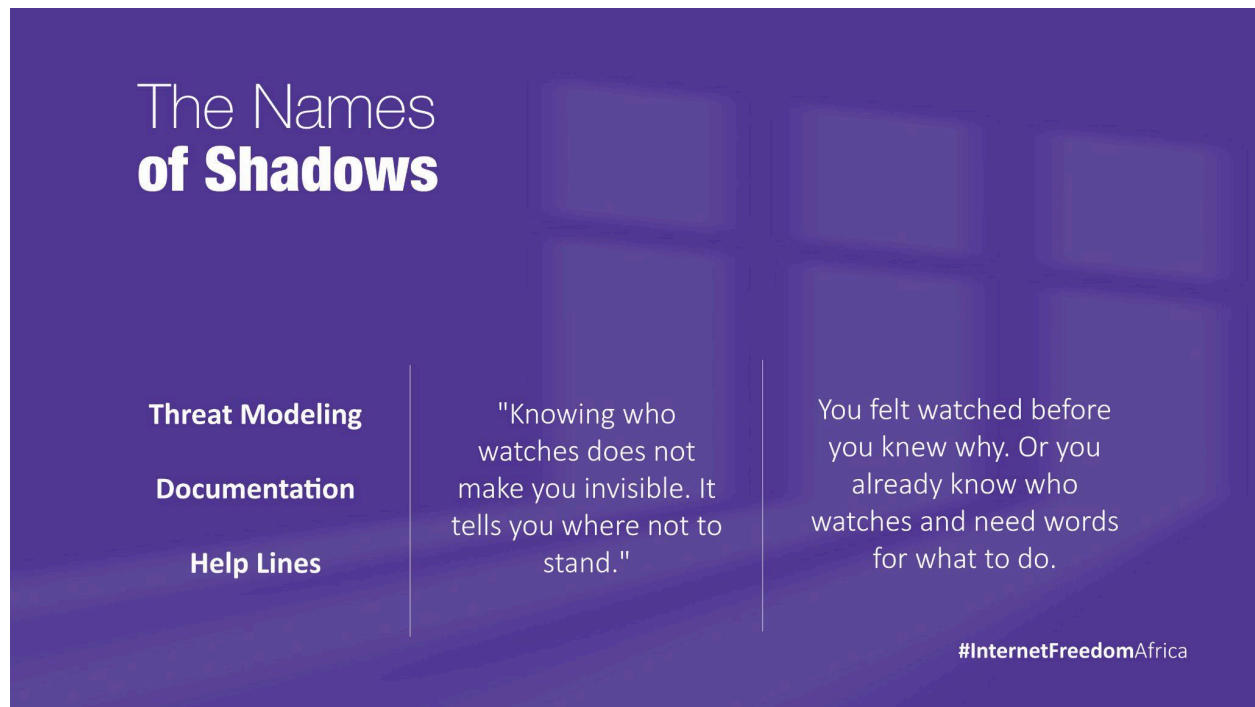
**Conceptual frame:** The most effective attack is one that arrives in a voice you recognise. Not a stranger. A colleague. Your IT department. Your bank. Your union. The message is almost right. The logo is almost correct. The number is almost saved in your contacts. This quadrant does not ask why you trusted it.

Qn: *what constructed that trust?* Urgency. Familiarity. Authority.

**Companion (The Second Glance):** Verification practice

*"Before you open it, name the three things that made you trust it."* This is not software. It is a habit. It arrives as a question, not an answer.

*"When Did You Stop Being Alone?"*



**Thematic mapping:** Surveillance

**Day stage:** *You are watched / You resist*

*Stillness. Heaviness. This is the quadrant where the terrain reveals itself as shaped by power.*

**Conceptual frame:** Surveillance is not paranoia. It is policy. It is procurement. It is a line in a government budget. It is an Israeli company's contract with an African ministry of interior. It is a platform's data broker deal. It is the friend who screenshots before he deletes. This quadrant names the watchers — not abstractly but specifically: governments with Pegasus contracts, platforms with monetised outrage, political actors who know that one woman's phone number shared to a million people will do what no law could.

Qn: "When did you stop being alone on this road?"

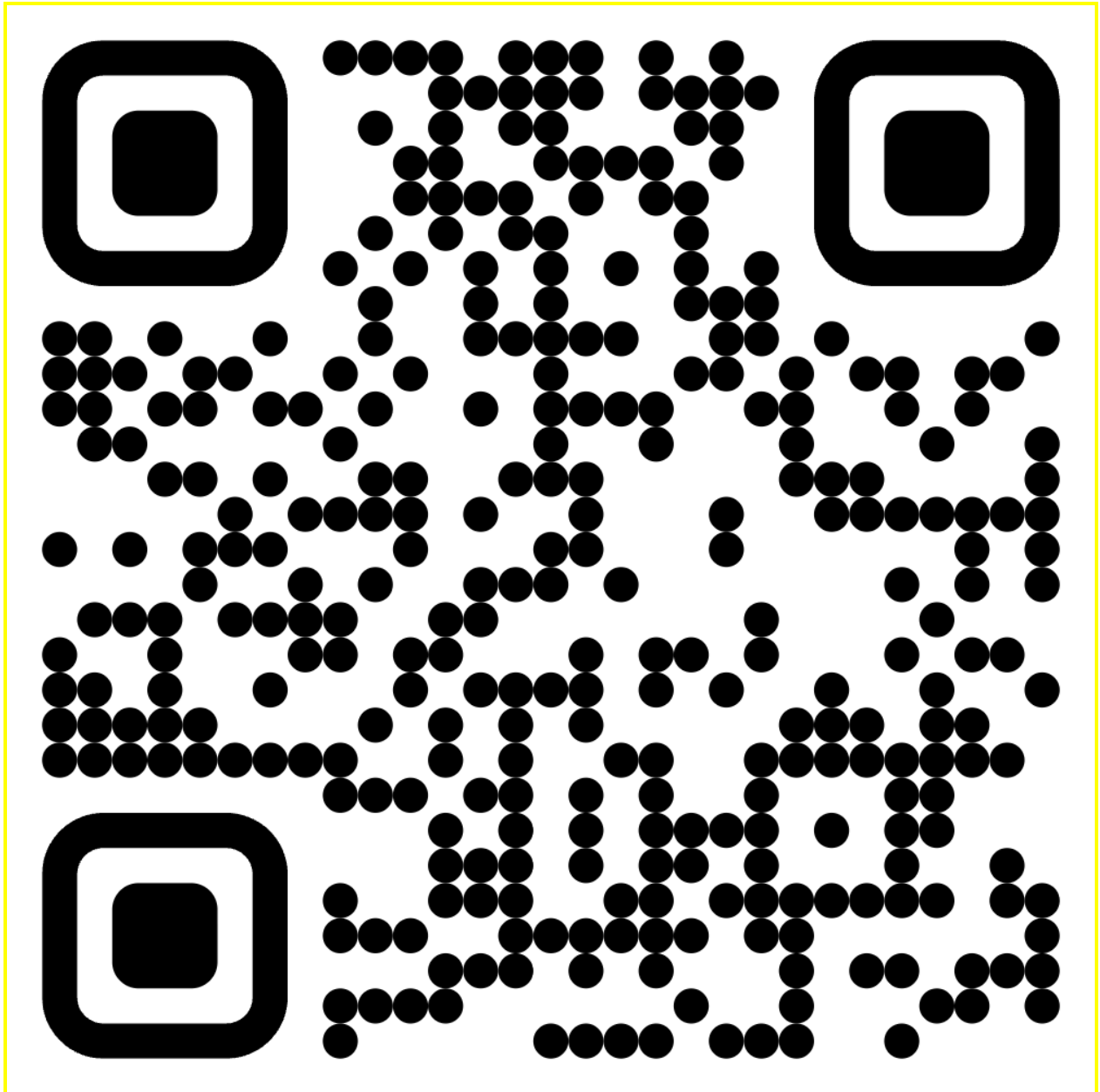
**Companion (The Names of Shadows):** Threat modeling + documentation + legal channels  
*"Knowing who watches does not make you invisible. It tells you where not to stand."*

## EXIT — "The Road Continues"

**Thematic mapping:** Awareness

**Day stage:** *You find others*

Not closure. Recognition. The road does not end — it continues with better companions.



Thank you and farewell ...